

*Designers & Manufacturers of Drilling & Tapping Solutions*

## Style SLH & LSH Single Speed Self-Contained Tapping Units-Series 29000

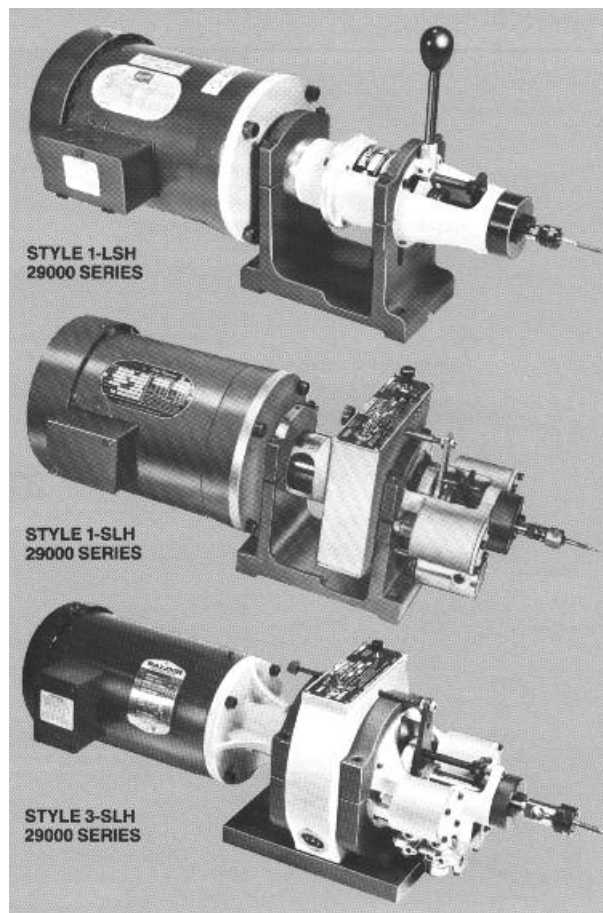
- Complete unit with single speed, direct drive motor.
- Lead screw operation for perfect tapping every time.
- Use independently or with other units to form special machines
- Reverses at twice forward speed to increase productivity 33% and avoid tap jamming.

Proconier self-contained "package" units give you high speed precision tapping – just about anywhere you need it. These Lead Screw Tapping Units are designed for maximum efficiency, high production and low operating cost on a wide variety of tapping jobs. They easily adapt to many standard and specialized set-ups to give you versatility and value you just can't match in any other unit.

Each SLH model is a self-contained unit requiring no drill press or outside feeding mechanism. The adjustable tapping stroke is "built-in," air-operated and electrically controlled. Models can be used with an existing machine, tied in with a production machine for secondary operations, or placed in special set-ups with other units in virtually any configuration.

Our "packaged units" feature the Renowned Proconier lead screw tapping head, the most reliable and precise tapping head ever designed! The lead screw feeds the tap at exactly the proper rate through a smooth, extra sensitive friction clutch. So the tap is fed into the work gently and automatically, with a minimum of air pressure. And the results are the same, time after time – uniform, precisely tapped pieces that never vary.

Built-in controls provide single cycle, jog and automatic operation with either push-button, foot switch or external actuating equipment.



STYLE	CAPACITY					MAX. STROKE	MAX CYCLES per hr.	SHIP WEIGHT lbs.
	SOFT MATERIAL			STEEL INCH	STEEL MM			
	INCH	MM	PIPE					
1-LS	00-#8	M1-M4	–	00-#8	M1-M4	1 1/8"	3600	7
1-LSH	00-#8	M1-M4	–	00-#8	M1-M4	1 1/8"	3600	32
1-ALS	0-1/4"	M2-M6	–	0-#10	M2-M4	3/4"	3600	16
1-SLH	0-1/4"	M2-M6	–	0-#10	M2-M4	3/4"	3600	55
3-ALS	#10-3/4"	M6-M18	1/4"	#10-1/2"	M6-M12	2 1/4"	1800	36
3-SLH	#10-3/4"	M6-M18	1/4"	#10-1/2"	M6-M12	2 1/4"	1800	81

### STANDARD EQUIPMENT

Furnished with grounded tapper power cord, air line with fittings, foot control grounded cord and switch, set of 4 tap collets, wrenches and coupling per motor. Style SLH includes holding brackets as required. Controls and power lines for motor not included. Models 1LS, 1-LSH, 1-ALS & 1-SLH use #1 collets (51800 Series) and models 3-ALS & 3-SLH use #3 collets (53800 Series).

**Note: Collets & Lead screw assemblies are not included.**

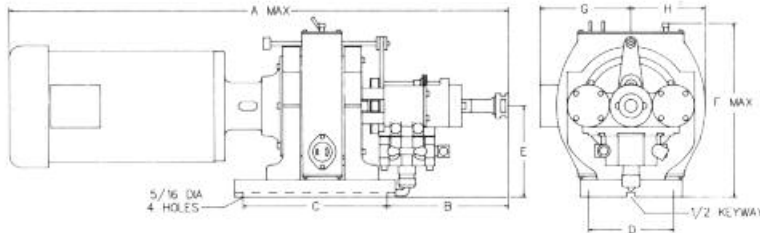
For LEFT HAND operation the unit must be modified.  
Series Order Number 57550. (Use left hand Lead Screw.)

Designers & Manufacturers of Drilling & Tapping Solutions

Order Numbers for SLH-LSH Tappers with Motor*				
STYLE	HP	RPM	SERIES ORDER NUMBERS	
			115/230-1-60	230/460-3-60
1-LSH	1/2	1725	29041	29042
1-LSH	1/2	1140	29043	29044
1-SLH	1/2	1725	29002	29004
1-SLH	1/2	1140	29006	29008
3-SLH	1	1140	—	29022
3-SLH	3/4	860	—	29024

Order lead screw assemblies # 1AL (21000 Series) 3AL (23000 Series)

\*Tapper controls are 115VAC, 1 Phase, 60 HZ unless otherwise requested.



Tapping Head Only	
STYLE	115-1-60
1-LS	29040
1-ALS	29000
3-ALS	29020

SERIES	STYLE	A MAX.	B	C MTG.	D MTG.	E	F MAX.	G	H
29041-44	1-LSH	20 <sup>3/4</sup>	4 <sup>7/8</sup>	6 <sup>3/16</sup>	3 <sup>1/4</sup>	4 <sup>1/2</sup>	11 <sup>1/4</sup>	5	3 <sup>1/2</sup>
29002-08	1-SLH	23 <sup>1/2</sup>	5 <sup>3/8</sup>	6 <sup>3/16</sup>	3 <sup>1/4</sup>	4 <sup>1/2</sup>	8 <sup>1/2</sup>	5	3 <sup>1/2</sup>
29022	3-SLH	27 <sup>1/2</sup>	7 <sup>1/4</sup>	8 <sup>1/2</sup>	5	5 <sup>9/16</sup>	10 <sup>1/4</sup>	6 <sup>9/16</sup>	4 <sup>3/8</sup>
29024	3-SLH	29	7 <sup>1/4</sup>	8 <sup>1/2</sup>	5	5 <sup>9/16</sup>	10 <sup>1/4</sup>	6 <sup>9/16</sup>	4 <sup>3/8</sup>

*Designers & Manufacturers of Drilling & Tapping Solutions*

## Style VLHH & VLHV Self-Contained Tapping Units-Series 29000

- Complete unit utilizing standard motors, gear belt drive or 3 step pulley.
- Lead screw operation for perfect tapping every time.
- Easy adaptable to special set-ups.
- Reverses at twice forward speed to increase productivity 33% and avoid tap jamming.

These high speed self-contained "package" units give you production precision tapping. And they offer something style SLH doesn't – single speed gear belt drives or 3 speed V-belt drives that provide varying speeds for different conditions.

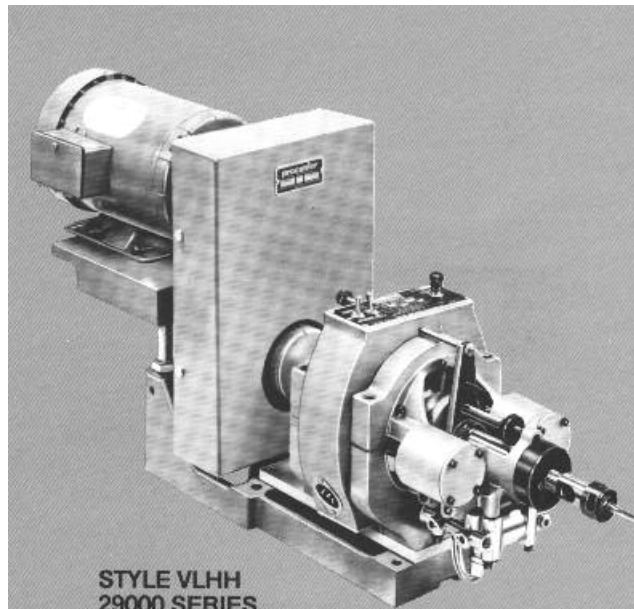
Because they're self-contained, they can be set up just about anywhere, do the job quickly and well, and be easily moved. These versatile and flexible units can be adapted for use with an existing machine or used for secondary operations on a production machine, tool.

But no matter how you use them, all of our units use the exclusive Proconier lead screw tapping head, recognized throughout industry as the most reliable and precise tapping head made. The lead screw, turning in the stationary lead screw nut, feeds the tap at exactly the proper rate through a smooth, sensitive friction clutch. The tap is fed into the work gently, automatically, with a minimum of air pressure. The results – always the same – precisely tapped, perfect parts again and again.

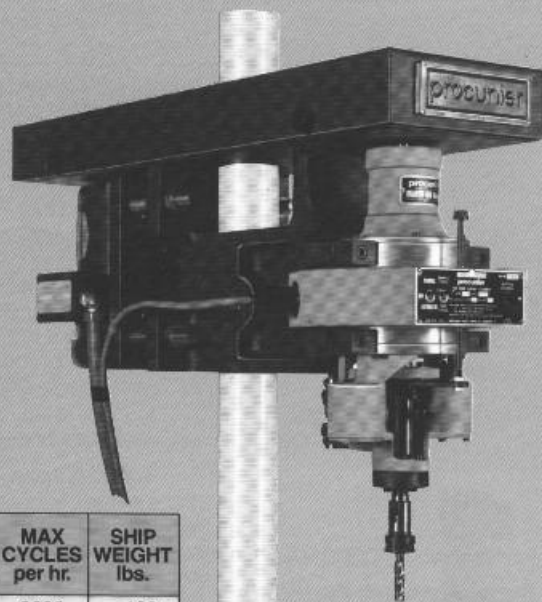
Built-in controls provide for just about any operation you want, whether it's single cycle, jog or automatic operation.

### STANDARD EQUIPMENT

All styles furnished with grounded tapper power cord, air line with fittings, foot control grounded cord and switch, wrenches. Controls, column, raising mechanism, flange and power lines for motor not included. Models 1-VLHH, 1-VLHV and 1-ALH, use #1 collets (51800 Series) and models 3-VLHH, 3-VLHV and 3-ALH use #3 collets (53800 Series).



STYLE VLHH  
29000 SERIES



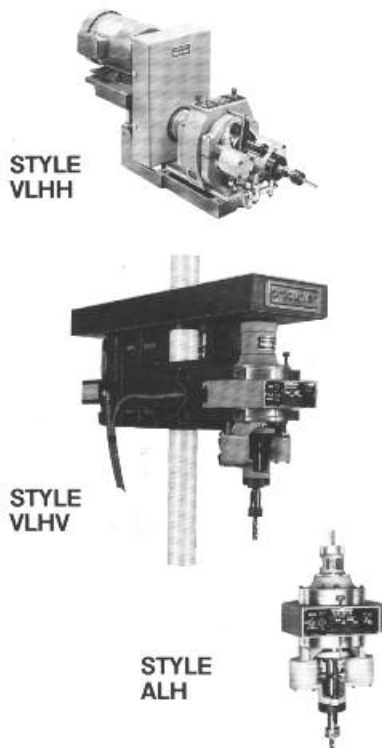
STYLE VLHV  
29000 SERIES  
(Column not included)

STYLE	CAPACITY					MAX. STROKE	MAX CYCLES per hr.	SHIP WEIGHT lbs.
	SOFT MATERIAL			STEEL INCH	STEEL MM			
	INCH	MM	PIPE					
1-VLHH	#0-1/4"	M2-M6	—	#0-#10	M2-M5	3/4"	3600	130
1-VLHV	#0-1/4"	M2-M6	—	#0-#10	M2-M5	3/4"	3600	140
1-ALH	#0-1/4"	M2-M6	—	#0-#10	M2-M5	3/4"	3600	16
3-VLHH	#10-3/4"	M5-M18	*3/8"	#10-1/2"	M5-M12	2 1/4"	1800	170
3-VLHV	#10-3/4"	M5-M18	*3/8"	#10-1/2"	M5-M12	2 1/4"	1800	180
3-ALH	#10-3/4"	M5-M18	*3/8"	#10-1/2"	M5-M12	2 1/4"	1800	35

\*For 3/8" Pipe tap use #3-AL4TG lead screw assembly (24000 Series) and use #4 collets (54000 Series).

Designers & Manufacturers of Drilling & Tapping Solutions

# Self-Contained Tapping Units-Series 29000

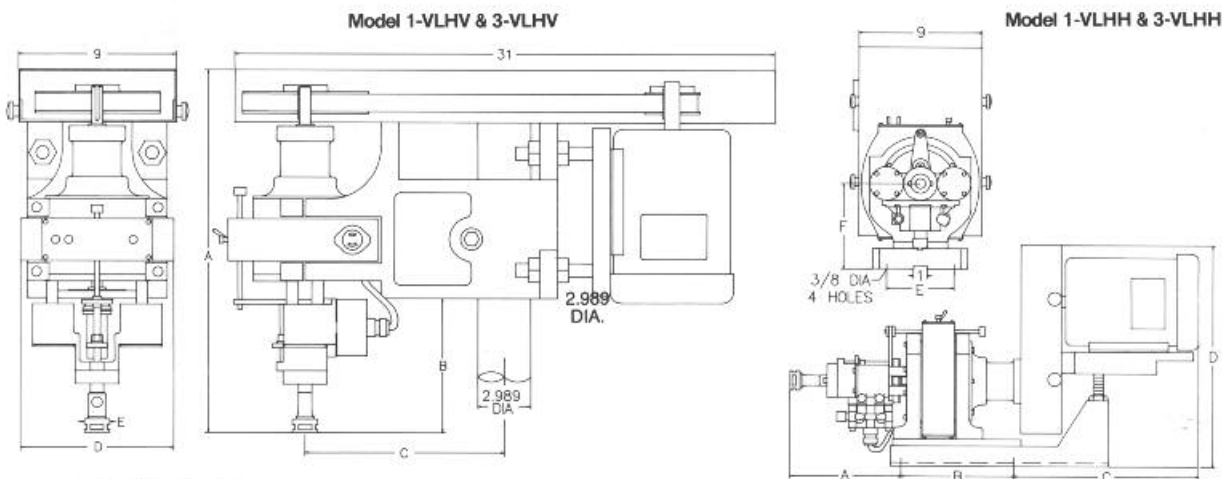


Order Numbers for Style VLHH, VLHV and ALH Tappers				
Models with Motor				
Model	HP	RPM	Series Order Number	
			115/230-1-60	230/460-3-60
1-VLHH	1/2	3-speed V-belt 578-1035-1725	29011	29012
3-VLHH	1 1/2	800 thru 1200*	—	29031
3-VLHH	1 1/2	450 thru 750*	—	29032
3-VLHH	1 1/2	280 thru 400*	—	29033
1-VLHV	1/2	3-speed V-belt 578-1035-1725	29015	29016
3-VLHV	1 1/2	800 thru 1200*	—	29035
3-VLHV	1 1/2	450 thru 750*	—	29036
3-VLHV	1 1/2	280 thru 400*	—	29037

For LEFT HAND operation, the unit must be modified. Series Order Number 57550.(Use left hand Lead Screw.)  
\*Select single speed within range, uses gear belt and pulley.

Tapping Head Only	
Model	Series Order Number
1-ALH (with 5/8" dia. pulley shaft)	29010
3-ALH (with 5/8" dia. pulley shaft)	29030

All tapper controls are 115V, 1PH, 60HZ. Lower voltages available upon request.  
Air controls are required.  
Order lead screw assemblies separately. Models 1-ALH, 1-VLHH and 1-VLHV use style 1-AL (21000 Series) and models 3-ALH, 3-VLHH and 3-VLHV use style 3-AL (23000 Series).



**DIMENSIONS**

SERIES	STYLE	A	B	C	D	E	SERIES	STYLE	A	B	MTG.	C	D	E	MTG.	F
29015	1-VLHV	15 <sup>9</sup> / <sub>16</sub>	6	11 <sup>3</sup> / <sub>8</sub>	6 <sup>1</sup> / <sub>4</sub>	3/4	29011	1-VLHH	5 <sup>1</sup> / <sub>8</sub>	5 <sup>7</sup> / <sub>8</sub>	13	16	5	6		
29016	1-VLHV	15 <sup>9</sup> / <sub>16</sub>	6	11 <sup>3</sup> / <sub>8</sub>	6 <sup>1</sup> / <sub>4</sub>	3/4	29012	1-VLHH	5 <sup>1</sup> / <sub>8</sub>	5 <sup>7</sup> / <sub>8</sub>	13	16	5	6		
29035	3-VLHV	21	8	11 <sup>5</sup> / <sub>16</sub>	8 <sup>3</sup> / <sub>4</sub>	1 <sup>3</sup> / <sub>8</sub>	29031	3-VLHH	8 <sup>1</sup> / <sub>2</sub>	8 <sup>3</sup> / <sub>8</sub>	13	16 <sup>3</sup> / <sub>8</sub>	5	6 <sup>5</sup> / <sub>16</sub>		
29036	3-VLHV	21	8	11 <sup>5</sup> / <sub>16</sub>	8 <sup>3</sup> / <sub>4</sub>	1 <sup>3</sup> / <sub>8</sub>	29032	3-VLHH	8 <sup>1</sup> / <sub>2</sub>	8 <sup>3</sup> / <sub>8</sub>	13	16 <sup>3</sup> / <sub>8</sub>	5	6 <sup>5</sup> / <sub>16</sub>		
29037	3-VLHV	21	8	11 <sup>5</sup> / <sub>16</sub>	8 <sup>3</sup> / <sub>4</sub>	1 <sup>3</sup> / <sub>8</sub>	29033	3-VLHH	8 <sup>1</sup> / <sub>2</sub>	8 <sup>3</sup> / <sub>8</sub>	14	17 <sup>1</sup> / <sub>4</sub>	5	6 <sup>5</sup> / <sub>16</sub>		

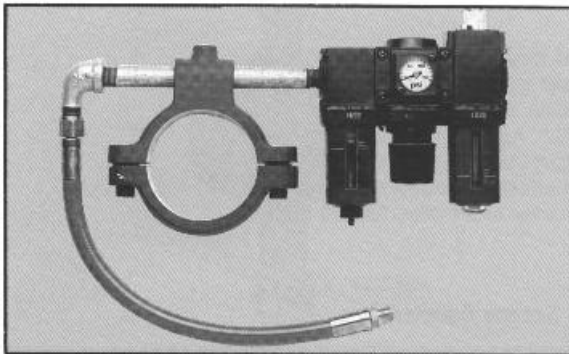


**ROCKFORD** DRILL HEAD



*Designers & Manufacturers of Drilling & Tapping Solutions*

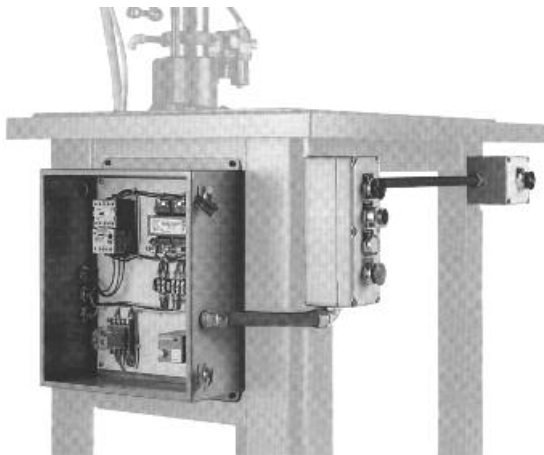
## Machine Controls



### AIR CONTROL ASSEMBLY

Includes air regulator, gauge, filter, lubricator, 2-piece clamp to fit machine column, air line and fittings. Also available as accessory for Drill Presses with column diameters of (2 3/4" to 4") as listed below.

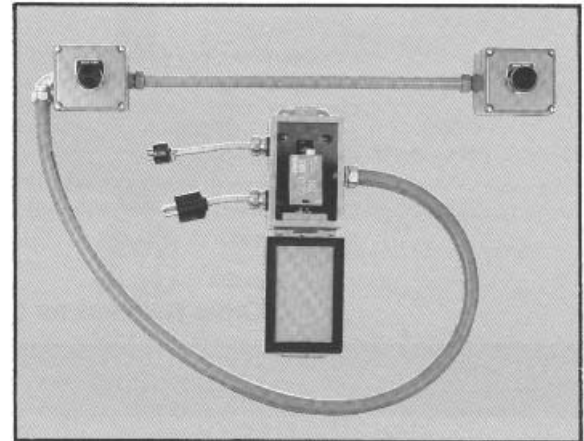
MODEL	COLUMN DIA.	SERIES ORDER NUMBER
1000A or 3000A	3"	57520
1A03 or 3A03	2 3/4"	57501
1A03 or 3A03	3"	57503
1A03 or 3A03	3 1/2"	57505
1A03 or 3A03	3 3/4"	57507
1A03 or 3A03	4"	57509



### COMPLETE ELECTRICAL PACKAGE

For Styles 1000A, 3000A and 3037 includes anti-tiedown dual palm push button controls in an oil-tight housing mounted to machine table. Has illuminated "power on" motor start button, emergency shut-off, 230/460V to 110V transformer for controls, magnetic motor starter with overloads, machine tools control relay and fuse. **Furnished as standard equipment on all complete machines.**

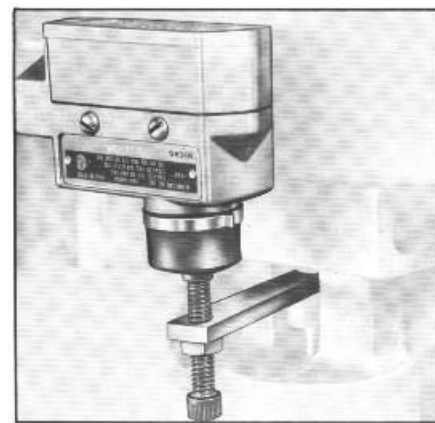
Series order number 57525



### 1-AL & 3-AL DUAL PALM BUTTONS

Converts 21000 Series and 23000 series to two-hand operation. Requires operator to use both hands to actuate cycle. Anti-tiedown feature. **Optional accessory.**

Series order number 57530



### INTERLOCK SWITCH

For use when automating a lead screw tapper in conjunction with a turn table or part feeding mechanism which requires an electrical signal after completion of a cycle. Also is used to control mist coolant systems. Assembly is furnished complete with switch, actuating arm with adjustable actuator, screws and nuts. **Optional accessory.**

MODEL	SERIES ORDER NUMBER
1-AL	57535
3-AL	57537

*Designers & Manufacturers of Drilling & Tapping Solutions*

## Model 1000A & 3000A Complete Lead Screw Tapping Machines-Series 29000

- Easily changed lead screw assembly
- Rigid base with coolant trough
- Head raising mechanism
- Water-tight pushbutton controls
- Reverses at twice forward speed to increase productivity 33% and avoid tap jamming.

Whether you want your Proconier Lead Screw tapping machine in a single spindle or multiple had configuration, there's one that's right for your needs, production requirements and budget. Single spindle machines are described here.

The 1000A and 3000A Single Spindle Lead Screw Tapping Machines are precision machines offering you all the advantages of lead screw tapping – perfect pieces every time without stripping threads, breaking taps or damaging pieces. Ideal where one tapping spindle is all that's required.

Complete, ready-to-use machine. All you do is plug it in, connect the air and push a button.

Gear belt pulley on Model 3000A provides positive power, eliminates slippage, insures full torque. 1000A uses 3-speed V-belt drive.

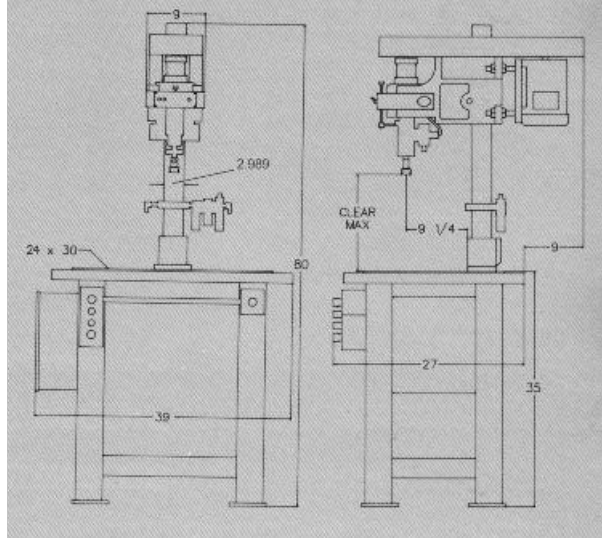
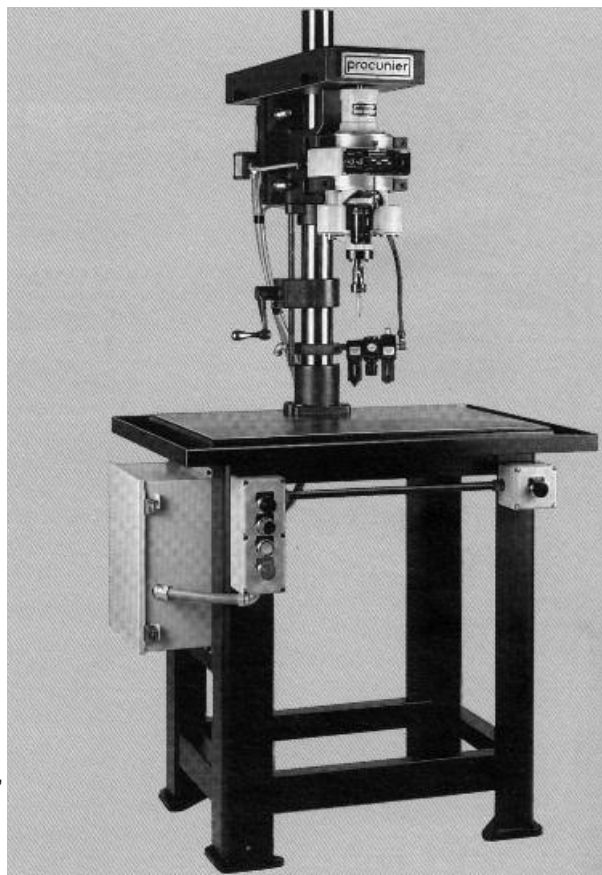
### STANDARD EQUIPMENT

Models 1000A and 3000A are supplied with complete electrical packages, air control assembly (filter, regulator, lubricator) and wrenches. Model 1000A uses #1 (51800 Series) and Model 3000A uses #3 (53800 Series). Note: Lead screw assemblies are not included.

For LEFT HAND operation the unit must be modified. Series Order Number 57550. (Use left hand Lead Screw).

	MODEL 1000A	MODEL 3000A
Capacity—Steel	0-#10, M2-M4	#10-1/2" M6-M12
Soft Material	0-1/4" M2-M6	#10-3/4" M6-M18
Pipe Thread	—	1/8" to 3/8"
Stroke (Max.)	3/4"	2 1/4"
Cycles (Max.)	3600 per hr.	1800 per hr.
Depth Control	1/2 of Turn	1/2 of Turn
Speed (Max.)	600 to 2000 R.P.M.	400 to 1200 R.P.M.
Pulley's	3 Step	Gear Belt
Motor	1/2 HP 230/460-3-60	1 1/2 HP 230/460-3-60
Tapper controls	Air—110V	Air—110V
Clearance (Max.)	30"	25"
Table	27" x 36" Oil Trough	27" x 36" Oil Trough
Working Surface	24" x 30" Work Surface	24" x 30" Work Surface
Shipping Weight	750 lbs.	780 lbs.
Order Numbers	29051	29053

When ordering: Specify voltage required. Select speed desired on 3000A between 400-1200 RPM. Order lead screw assemblies separately Model 1000A uses style 1-AL (21000 Series) and Model 3000A uses style 3-AL (23000 Series).



*Designers & Manufacturers of Drilling & Tapping Solutions*

- Complete and ready-to-use lead screw tapping.
- Taps up to 17 holes. Minimum spindle centers = 1/2" collet or 3/8" bored type.
- Simplicity of set-up – ease of operation.
- Reverses at twice forward speed to increase productivity 33% and avoid tap jamming.

The Style 3037 is a total multiple Lead Screw tapping machine including the fabulous Proconier Lead Screw. About all you do for perfect pieces throughout a production run, is plug it in, mount the fixture, and push the button. Everything you need for instant set-up and production has been carefully combined into this one tapping machine. It can provide up to 17 perfectly tapped holes with every stroke.

While the results are uniformly precise pieces, without damage to taps, threads or parts, the machine is so simple and easy to operate, you don't need trained, expensive help to give you perfect results, piece after piece.

The Style 3037 machine is available with your choice of multiple tapping attachments.

**STANDARD EQUIPMENT**

Style 3037 machine furnished with Lead Screw tapper, motor, multiple head of your choice, air control assembly, base assembly, complete electrics and overload protection and oil trough table with column and raising mechanism. Lead screw assemblies, spindles with U-joints & collets (not included with the machine.)

**SPECIFICATIONS**

- Power - 230/460VAC, 3Phase, 60Hz
- Stroke - 2 1/4" max.
- Cycles - 1800 per hr. max.
- Speed - 400 to 1200 RPM max.
- Motor - 1 1/2 HP
- Working Surface - 9" x 14"
- Approximate Weight (less accessories) - 840 lbs.

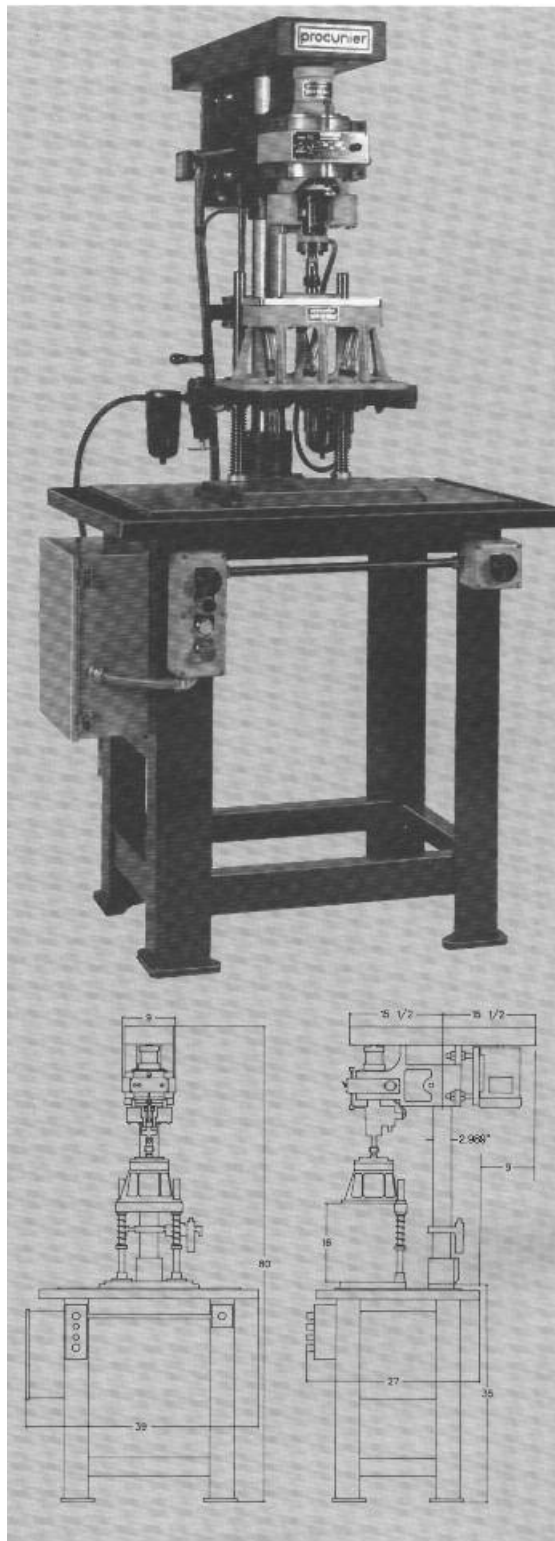
When ordering: Specify voltage required. Select speed desired on 3037 between 400-1200 RPM Lower RPM special.

For LEFT HAND operation the unit must be modified. Series Order Number 57500 (Use left hand Lead Screw.)

**Order Numbers for Style 3037 Machines**

STYLE MACHINE	NO OF DRIVERS	GEAR RATIO	CAPACITY *				ORDER NUMBER
			QTY.	MIN. SIZE	QTY.	MAX. SIZE	
3037MJ	7	1:1	7	#2-56	4	5/16-18	29071
3037MJ	6	1:2	6	#2-56	4	5/16-18	29072
3037MK	9	1:1	9	#2-56	4	5/16-18	29073
3037MK	8	1:2	8	#2-56	4	5/16-18	29074
3037ML	9	1:1	9	#2-56	4	5/16-18	29075
3037ML	8	1:2	8	#2-56	4	5/16-18	29076
3037MM	13	1:1	13	#2-56	4	5/16-18	29077
3037MM	12	1:2	12	#2-56	4	5/16-18	29078
3037MN	13	1:1	13	#2-56	4	5/16-18	29079
3037MO	17	1:1	17	#2-56	4	5/16-18	29080
3037-MP	10	1:1	10	#2-56	4	5/16-18	29081
3037MQ	17	1:1	17	#2-56	4	5/16-18	29082

\*Based on free machining steel and type of spindle assembly used.



*Designers & Manufacturers of Drilling & Tapping Solutions*



## ATU - 4 Production Tapping Machine and Tapping Unit

Precision lead screw tapping to keep you at the cutting edge of tapped hole production.

**The ATU series tapping units and machines from Ettco give you precise efficient hole production.**

The new solid-state programmable controller allows faster set up and control, reduces the size of the control panel, and decreases the number of mechanical relays. The operator interface terminal is swivel mounted for easy positioning and viewing. The terminal shows operational and alarm messages and allows the spindle to be jogged in either direction.

**The ATU-4** is available either as a floor-standing machine or as unit that can be mounted in any position from vertical to horizontal. The machine includes a welded steel base and table with T-slot, coolant line, coolant tank with pump and double palm start buttons.

### AT a glance....

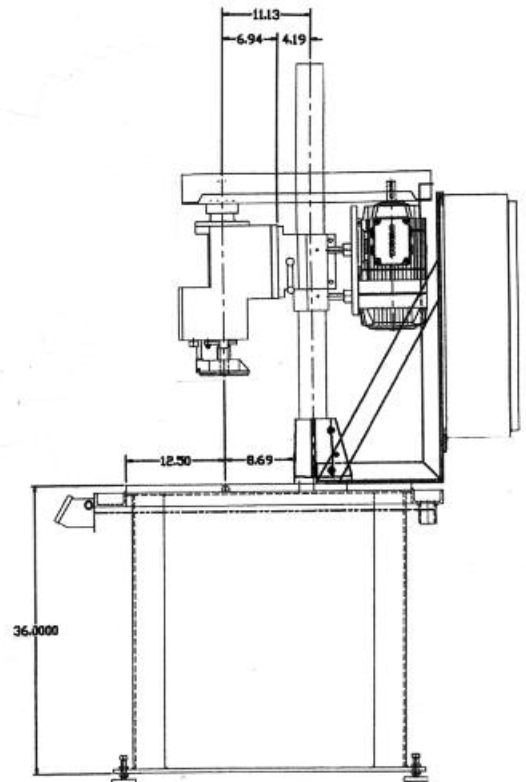
- 4" of lead screw travel.
- 25 cycles per minute possible.
- Swivel mounted operator interface terminal, with English or Spanish display.
- Solid-state programmable controller.
- 3.5 HP, 1140 RPM high reversing motor 230/460/3/60.

### Features & Specifications:

- Unit & Machine:
- 4" of lead screw travel.
- 25 cycles per minute possible.
- Solid-state programmable.
- 3.5, hp 1140 RPM high reversing motor 230/460/3/60.
- 194 Inch pounds torque.
- Pulley drive (370-1500 RPM)
- No hole protection
- Electrical control panel and controls for double palm
- Push button operation.
- Lead screw drip oiler, with adjustable flow rate.
- Resettable cycle counter, accessible through interface terminal
- Optional speed reducer to permit speeds as low as 55 RPM.

### Machine:

- Swivel mounted operator interface terminal, with English or Spanish display.
- 4" Diameter column with raising & lowering mechanism.
- 24" W X 36" H Machine base of welded steel construction.
- 10 Gallon capacity coolant system.
- Excellent power source for Ettco multiple spindle heads.



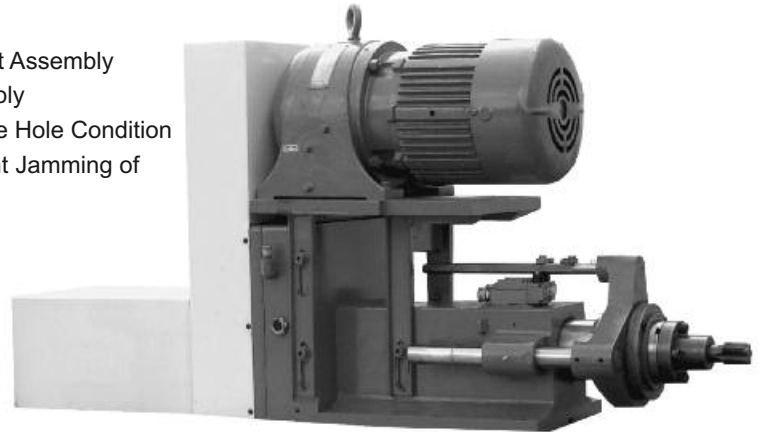


*Designers & Manufacturers of Drilling & Tapping Solutions*

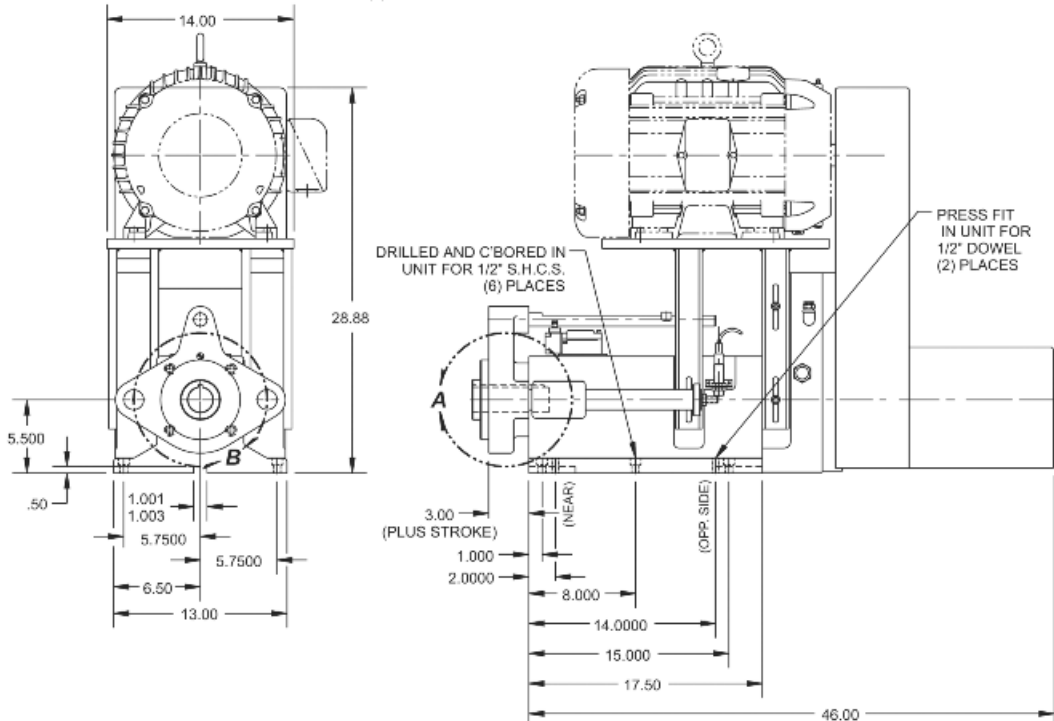
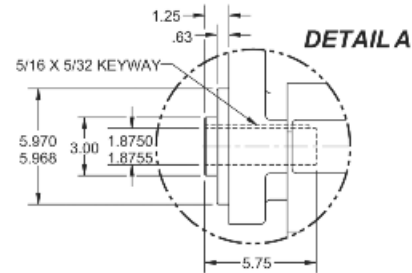
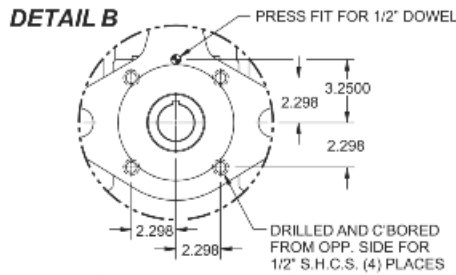
**Model LQ-1530 Self Contained, Lead Screw Operated Tapping Unit**

**Standard Features**

- Precision Thread Ground Lead Screw and Nut Assembly
- Quick Change of Lead Screw and Nut Assembly
- Tap Jam Limit Switch for No Hole or Undersize Hole Condition
- Safety Return Override Limit Switch to Prevent Jamming of the Lead Screw
- Alloy Aluminum Main Body
- Large Quill Diameter and Quill Bearings
- All Ball Bearing, Spline Driven
- ASA I.D. Spindle
- Enclosed Belt Guard
- Mounting for Multi SpindleHead
- 1 : 2.46 Reduction Gear Box Assembly
- Conveniently Located Control Dogs
- Heavy-Duty Motor Mounting Bracket with Jack Screw Assembly



<b>STROKE</b>	<b>0 - 8 INCHES</b>
<b>LEAD SCREW PITCH</b>	<b>6 TO 32</b>
<b>DRIVE SHAFT</b>	<b>2 INCHES</b>
<b>DIAMETER OF QUILL</b>	<b>4-1/2 INCHES</b>
<b>MOTOR HORSE POWER</b>	<b>7-1/2 TO 15</b>



*Designers & Manufacturers of Drilling & Tapping Solutions*  
**Model VSQ-2500 & VSQ-3250 Vertical Drill Machine**

**Standard Features**

- Rockford Self-Contained, Hydraulic Powered Quill Type Power Unit
- 3 HP Separate Pump Drive Assembly
- 3 to 25 HP Spindle Drive Motor
- HTD Pulleys and Belt
- Enclosed Belt Guard
- Swing Motor Plate Assembly for Easy Adjustment of HTD Drive Belt
- Air Counterbalance Assembly
- Fabricated Steel Base, Riser and Column
- Complete Set of Electrical Controls for Manual and Automatic Operation
- Programmable Controller



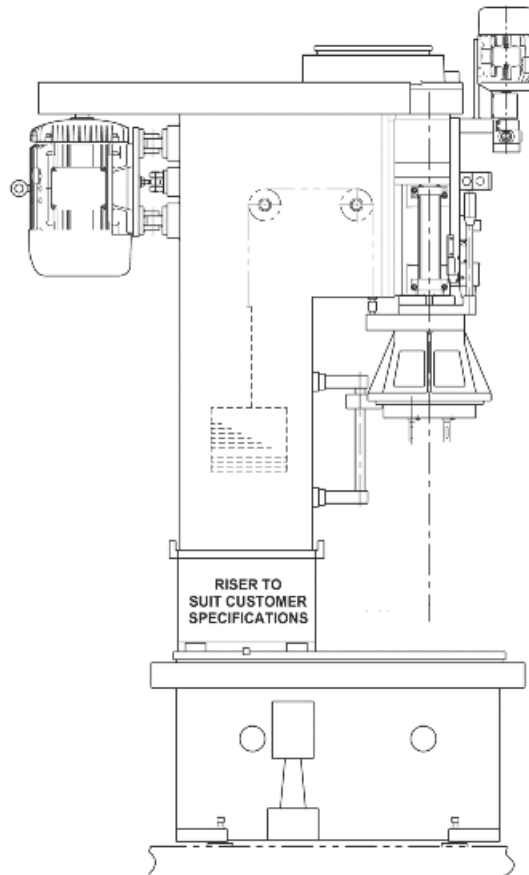
**VSQ-2500**

STROKE	0 - 12 INCHES
THRUST	4900 LBS. AT 500 PSI
RAPID APPROACH	110 IPM
MOTOR HORSE POWER	3 TO 20
H.P. TO OPERATE UNIT	3
PUMP RPM	1800
CAPACITY OF RESERVOIR	4 GALLONS
PRESSURE ADJUSTMENT	350 TO 1000 PSI

**VSQ-3250**

STROKE	0 - 12 INCHES
THRUST	8300 LBS. AT 500 PSI
RAPID APPROACH	80 IPM
MOTOR HORSE POWER	3 TO 25
H.P. TO OPERATE UNIT	3
PUMP RPM	1800
CAPACITY OF RESERVOIR	4 GALLONS
PRESSURE ADJUSTMENT	350 TO 1000 PSI

All Machines Can Be Custom Made  
To Meet Your Specifications

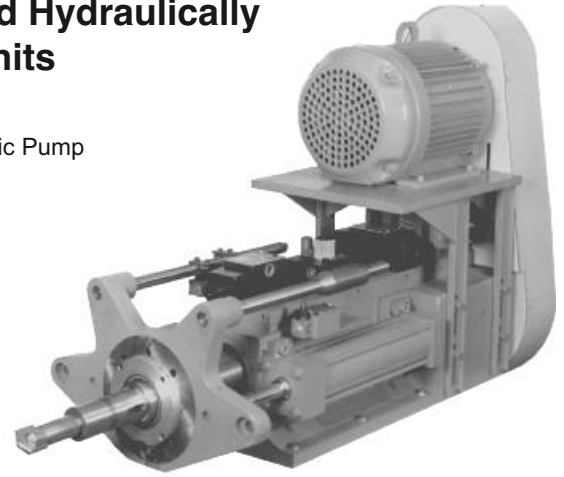


*Designers & Manufacturers of Drilling & Tapping Solutions*

**Model PQ-2500 & PQ-3250 Self Contained Hydraulically  
Powered Quill Type Power Units**

**Standard Features**

- 71/2 GPM, Variable Pressure, Variable Volume Vane Type Hydraulic Pump
- Commercial Temp. and Pressure Compensating Feed Valve
- Commercial Directional Valves
- Commercial Sub-Plate Mounted Hydraulic Cylinders
- Alloy Aluminum Main Body
- Large Quill Diameter and Quill Bearings
- All Ball Bearing, Spline Driven
- ASA I.D. Spindle
- Mounting for Multi Spindle Head
- Conveniently Located Control Dogs
- Heavy-Duty Motor Mounting Bracket with Jack Screw Assembly

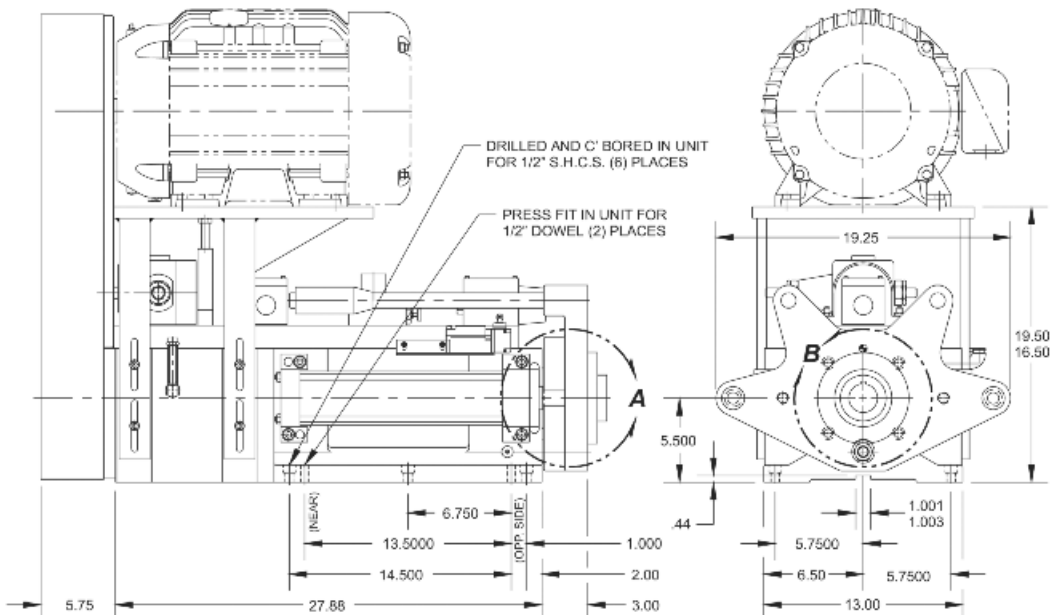
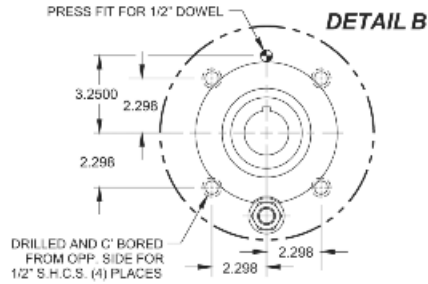
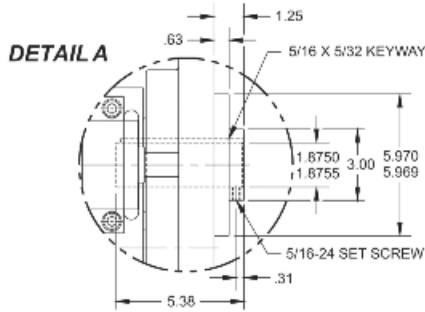


**PQ-2500**

STROKE	0 - 12 INCHES
THRUST	4900 LBS. AT 500 PSI
RAPID APPROACH	110 IPM
MOTOR HORSE POWER	3 TO 20
H.P. TO OPERATE UNIT	3
PUMP RPM	1800
CAPACITY OF RESERVOIR	4 GALLONS

**PQ-3250**

STROKE	0 - 12 INCHES
THRUST	8300 LBS. AT 500 PSI
RAPID APPROACH	80 IPM
MOTOR HORSE POWER	3 TO 25
H.P. TO OPERATE UNIT	3
PUMP RPM	1800
CAPACITY OF RESERVOIR	4 GALLONS

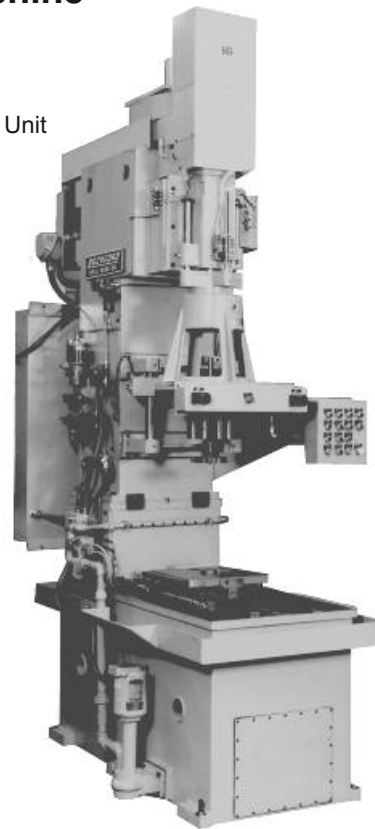


*Designers & Manufacturers of Drilling & Tapping Solutions*  
**Model VSLQ-1530 Vertical Tapping Machine**

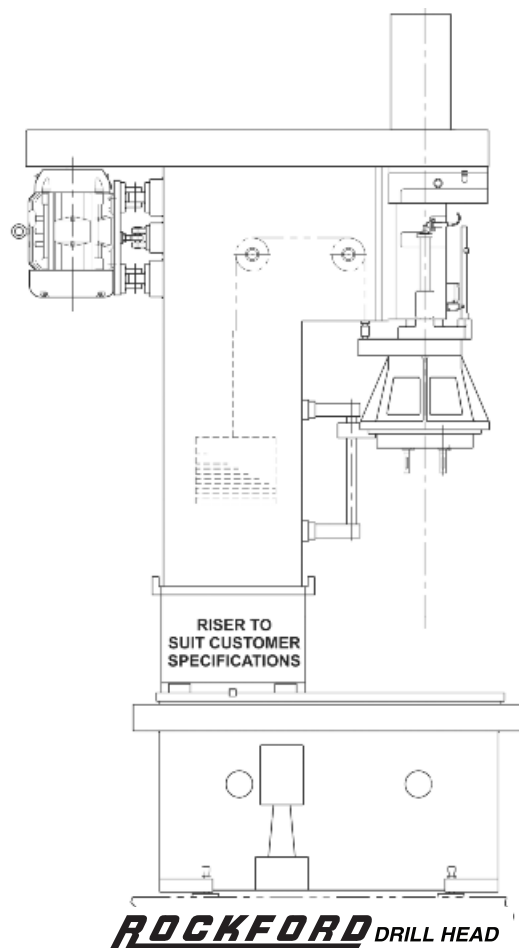
**Standard Features**

- Rockford Model LQ-1530 Self-Contained, Lead Screw Operated Tapping Unit
- 7-1/2 to 15 HP Spindle Drive Motor with Brake
- HTD Pulleys and Belt
- Enclosed Belt Guard
- Swing Motor Plate Assembly for Easy Adjustment of HTD Drive Belt
- Air Counterbalance Assembly
- Fabricated Steel Base, Riser and Column
- Complete Set of Electrical Controls for Manual and Automatic Operation

STROKE	0 - 8 INCHES
LEAD SCREW PITCH	6 TO 32
DRIVE SHAFT	2 INCHES
DIAMETER OF QUILL	4 ½ INCHES
MOTOR HORSE POWER	7-1/2 TO 15



All Machines Can Be Custom Made  
To Meet Your Specifications



*Designers & Manufacturers of Drilling & Tapping Solutions*

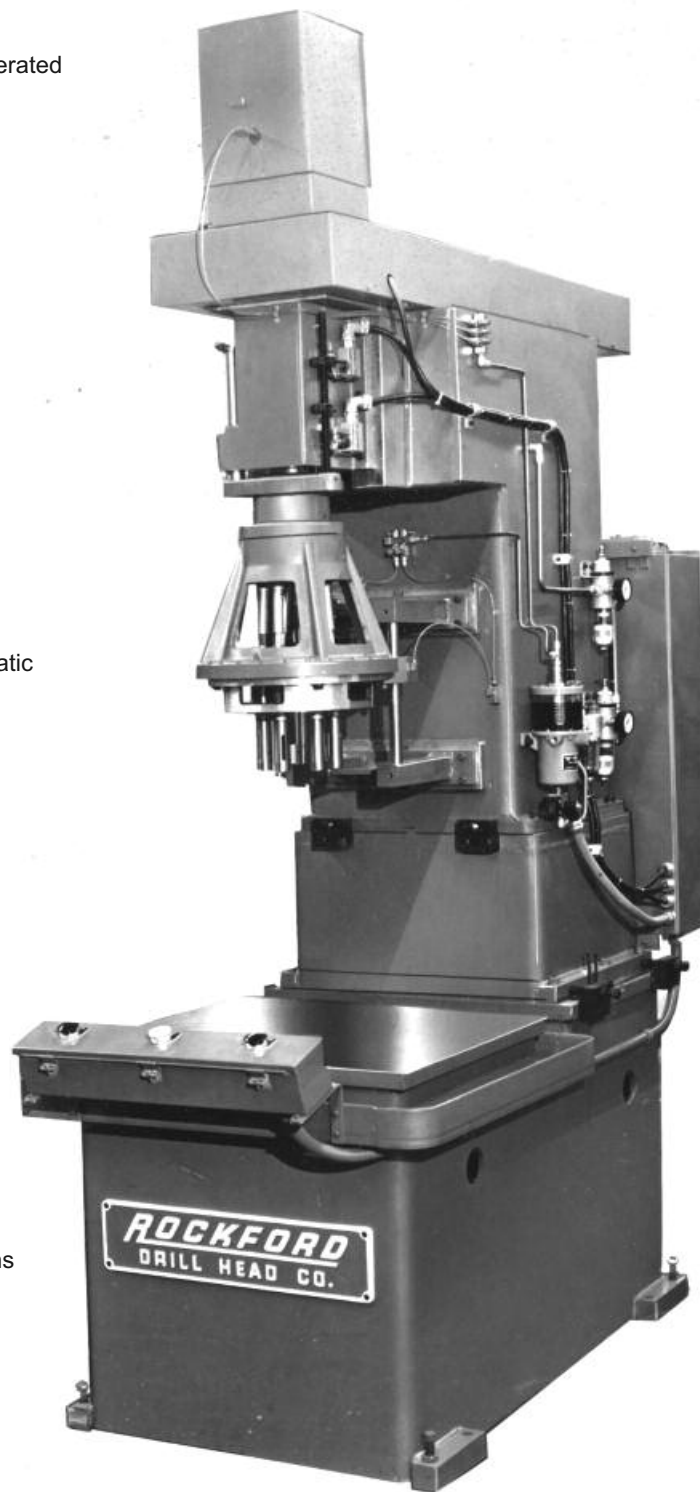
**Model VSLQ-7520  
Vertical Tapping Machine**

**STANDARD FEATURES INCLUDE:**

- Rockford Model LQ-7520 Self-Contained, Lead Screw Operated Tapping Unit
- 1 to 7-1/2 HP Spindle Drive Motor with Brake
- HTD Pulleys and Belt
- Enclosed Belt Guard
- Swing Motor Plate Assembly for Easy Adjustment of HDT Drive Belt
- Air Counterbalance Assembly
- Fabricated Steel Base, Riser and Column
- Complete Set of Electrical Controls for Manual and Automatic Operation
- Allen-Bradley Programmable Controller

**OPTIONAL EQUIPMENT**

- Mechanical Counterbalance Assembly
- Coolant System
- Automatic Lubrication System
- Chip Conveyor
- Slide, for Rapid Advance
- Universal or Fixed Center Head to Meet Your Specifications
- Fixture and Tooling to Meet Your Specification

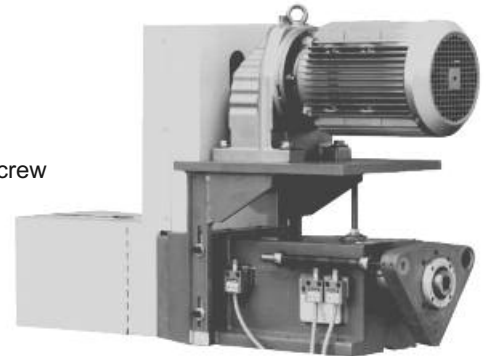


*Designers & Manufacturers of Drilling & Tapping Solutions*

**Model LQ-7520 Self Contained, Lead Screw Operated Tapping Unit**

**Standard Features**

- Precision Thread Ground Lead Screw and Nut Assembly
- Quick Change of Lead Screw and Nut Assembly
- Tap Jam Limit Switch for No Hole or Undersize Hole Condition
- Safety Return Override Limit Switch to Prevent Jamming of the Lead Screw
- Alloy Aluminum Main Body
- Large Quill Diameter and Quill Bearings
- All Ball Bearing, Spine Driven
- ASA I.D. Spindle
- Mounting for Multi Spindle Head
- Enclosed Belt Guard
- Conveniently Located Control Dogs
- Heavy-Duty Motor Mounting bracket with Jack Screw Assembly



Also available as a vertical tapping machine

STROKE	0 - 6 INCHES & 0-9 INCHES
LEAD SCREW PITCH	6 TO 32
DRIVE SHAFT	1-3/16 INCHES
DIAMETER OF QUILL	3 INCHES
MOTOR HORSE POWER	1 TO 7-1/2

