

Designers & Manufacturers of Drilling & Tapping Solutions



WHY OURS ARE THE BEST

- Aluminum Main Bodies
- Heat Treated Alloy Steel Gears
- Anti-Friction Ball & Roller Bearings
- Mountings for Drill or Tap Machines & Units
- Snap in Type Universal Joints
- Arm Type Spindle Assemblies
- "Posi-Quick" Set-up Plate
- Cartridge Type Spindle Assemblies
- "Slip Plate" Set-up Plate
- Guide Bar Arrangement
- Bushing Plate Assemblies

**ENGINEERING REQUIREMENTS NECESSARY
FOR THE PROPER SELECTION OF HEAD**

1. Material to be machined.....
2. Size of holes.....
3. Number of holes.....
4. Operation to be performed.....
5. Minimum center distance between holes
6. Maximum center distance between holes
7. Box area of pattern to be covered
8. Machine head is to be mounted on.....
9. Arm type spindle set-up or cartridge type spindle set-up.....
10. Type of perishable tool holders
11. Processing of piece part.....
12. Accessories required.....

**FAX OR SEND ABOVE CHECKLIST
FOR IMMEDIATE PRICE AND DELIVERY**

3445 Lonergan Drive, Rockford, IL 61125
 Tel: 815/874-9421 Fax: 815/874-9425 www.rockford-ettco.com
 304 Winston Creek Parkway, Lakeland, FL 33810
 Tel: 863/688-0071 Fax: 863/682-6233 www.procunier.com
 e-mail (sales@procunier.com)



Designers & Manufacturers of Drilling & Tapping Solutions



"20" SERIES / Procnier

MODEL	NO. OF DRIVES	DRILLING AREA NO.1 M.T. ADJ. - (IN)	DRILL OR TAP CAP. M.S.	A OVERALL HEIGHT IN.	B OUTSIDE DIA. IN.	C OVER ALL BASE DEPTH	D OVER ALL BASE WIDTH	E GUIDE BAR LOCATION	F FIXTURE & PART WIDTH	G GUIDE BAR DIA. IN.	WEIGHT BASIC HEAD LBS.	WEIGHT SPINDLE ASSY. LBS.	MAX. RPM	USE U/J ASSY #
2005	5	4.5	1/4	7-1/2	9	13	13-1/2	11	8-1/2	1	10	2	2000	
520	7	5	5/16	9-1/32	9	13	13-1/2	11	8-1/2	1	10	2		33270
MJ/MP	7/10	6		9-1/32	11-1/2	13	15-3/4	13-1/4	10-3/4	1	15	2		33270
720	7	7		9-1/32	11-1/2	13	15-3/4	13-1/4	10-3/4	1	15	2		33270
MK/MQ	9/17	8		9-1/32	13-1/2	13	15-3/4	13-1/4		1	15	2		33270
920	9	9		9-27/32	13-1/2	17	18	15-1/4	12-3/4	1	22	2		2020 L
1120	17	11		9-27/32	18-1/2	20	24	20-3/4	17-3/4	1	35	3		2020 L

"30" SERIES

530	7	5	3/8	9-1/32	9	13	13-1/2	11	8-1/2	1	10	2	2000	30305
730	7	7		9-1/32	11-1/2	13	15-3/4	13-1/4	10-3/4	1	15	2		30305
930	9	9		9-27/32	13-1/2	17	18	15-1/4	12-3/4	1	22	2		3030
1130	17	11		9-27/32	18-1/2	20	24	20-3/4	17-3/4	1-1/2	35	3		3030

"40" SERIES

940	9	9	1/2	13-3/4	15-7/8	17	20-1/2	17-3/4	15-1/4	1	45	4	1200	4040
1040	13	10		13-3/4	18	20	24	20-1/2	17-1/2	1-1/2	75	5		4040
1240	11	12		13-3/4	19-1/2	25-1/2	25-1/2	22	19	1-1/2	55	5		4040
1540	12	15		15-1/2	23-1/2	29-1/2	29-1/2	26-1/8	23-1/8	1-1/2	75	6		
1840	18	18		16-15/16	26-1/2	32	32-1/4	29-1/8	26-1/8	1-1/2	125	6		
2140	25	21		13-3/4	27						250	6		

"60" SERIES

660	4	7	3/4	14-5/8	15	15	21	17-3/8	14-3/8	1-1/4	55	7	1200	6060
960	9	9		13-3/4	15-7/8	17	20-1/2	17-3/4	15-1/4	1	45	7		6060
1060	13	10		13-3/4	18	20	24	20-1/2	17-1/2	1-1/2	75	8		6060
1260	13	12		13-3/4	19-1/2	25-1/2	25-1/2	22	19	1-1/2	75	8		6060
1560	12	15		15-1/2	23-1/2	29-1/2	29-1/2	26-1/8	23-1/8	1-1/2	75	8		
1860	18	18		16-15/16	26-1/2	32	32-1/4	29-1/8	26-1/8	1-1/2	125	10		
2160	25	21		13-3/4	27						250	10		

"80" SERIES

680	5	6	1	14-5/8	15	15	21	17-3/8	14-3/8	1-1/2	45	7	1200	8080
1280	10	12		18-5/8	19-1/2	25-1/2	25-1/2	22	19	1-1/2	90	10		8080
1680	12	16		17-1/8	23						175	10		
2080	24	20		19-3/16	30	28	37	33	29-1/2	2	225	10		
2580	26	25		19-3/16	35						250	10		

Includes adaptation to drill press advise complete specification.

Designers & Manufacturers of Drilling & Tapping Solutions



"20" SERIES

MODEL	NO. OF DRIVES	DRILLING AREA NO.1 M.T. ADJ. - (IN)	DRILL OR TAP CAP. M.S.	A OVERALL HEIGHT IN.	B OUTSIDE LENGTH IN.	C OVER ALL DEPTH IN.	D OVER ALL BASE DEPTH	E OVER ALL BASE WIDTH	F GUIDE BAR LOCATION	G FIXTURE & PART WIDTH	H GUIDE BAR DIA. IN.	WEIGHT BASIC HEAD LBS.	WEIGHT SPINDLE ASSY. LBS.	MAX. RPM
412-20	17	4 x 12	5/16	9-1/32	16-1/4	9	9	20-3/4	18-1/4	15-3/4	1	30	2	2000
420-20	29	4 x 20		9-29/32	24	8	10	28-1/2	26	23-1/2	1	35	2	
424-20	25	4 x 24		9-27/32	26	8	10	32-1/2	30	27-1/2	1	45	2	
614-20	17	6 x 14		9-27/32	18	10	12	23	20	17-1/2	1	40	2	
2111	11	2 3/4x15		18 3/16	17 1/4	7 1/4	10	18 1/2	12	18 1/2	1 1/4	45	2	

"30" SERIES

412-30	17	4 x 12	3/8	9-1/32	16-1/4	9	9	20-3/4	18-1/4	15-3/4	1	30	2	2000
420-30	29	4 x 20		9-29/32	24	8	10	28-1/2	26	23-1/2	1	35	2	
424-30	25	4 x 24		9-27/32	26	8	10	32-1/2	30	27-1/2	1	45	2	
614-30	17	6 x 14		9-27/32	18	10	12	23	20	17-1/2	1	40	2	

"40" SERIES

416-40	17	4 x 16	1/2	13-3/4	21	10	10	28	24-1/4	21-1/4	1-1/2	45	4	1200
616-40	13	6 x 16		13-3/4	24	14	15	30	26-3/4	23-3/4	1-1/2	50	4	
624-40	17	6 x 24		13-3/4	30	12	15	36	32-3/4	29-3/4	1-1/2	115	4	
815-40	19	8 x 15		13-3/4	23	17	16	29	25-3/4	22-3/4	1-1/2	65	4	
1012-40	20	10 x 12		13-3/4	20-1/2	18	14	26	22-3/4	19-3/4	1-1/2	70	6	
1015-40	21	10 x 15		13-3/4	23	18	16	29	25-3/4	22-3/4	1-1/2	75	6	
1020-40	24	10 x 20		13-3/4	28-1/2	17-1/2	16	34	30-3/4	27-3/4	1-1/2	95	6	
1424-40	28	14 x 24		13-3/4	32	23	20	37-3/4	34-1/2	31-1/2	1-1/2	150	6	

"60" SERIES

416-60	17	4 x 16	3/4	13-3/4	21	10	10	28	24-1/4	21-1/4	1-1/2	45	7	1200
616-60	13	6 x 16		13-3/4	24	14	15	30	26-3/4	23-3/4	1-1/2	50	7	
624-60	17	6 x 24		13-3/4	30	12	15	35-1/2	32-3/4	29-3/4	1-1/2	115	7	
815-60	19	8 x 15		13-3/4	23	17	16	29	25-3/4	22-3/4	1-1/2	65	7	
1012-60	20	10 x 12		13-3/4	20-1/2	18	14	26	22-3/4	19-3/4	1-1/2	70	8	
1015-60	21	10 x 15		13-3/4	23	18	16	29	25-3/4	22-3/4	1-1/2	75	8	
1020-60	24	10 x 20		13-3/4	28-1/2	17-1/2	16	34	30-3/4	27-3/4	1-1/2	95	8	
1424-60	28	14 x 24		13-3/4	32	23	20	37-3/4	34-1/2	31-1/2	1-1/2	150	8	

"80" SERIES

722-80	16	7 x 22	1	19-3/16	16-1/4	31-1/4	12	37-3/4	34-3/8	30-7/8	2	145	10	1200
1016-80	10	10 x 16		18-7/8	15-1/4	21-1/4					2	150	10	
1022-80	25	10 x 22		18-7/8	17-1/2	30					2	225	10	
1526-80	32	15 x 26		18-7/8	26	37					2	300	10	

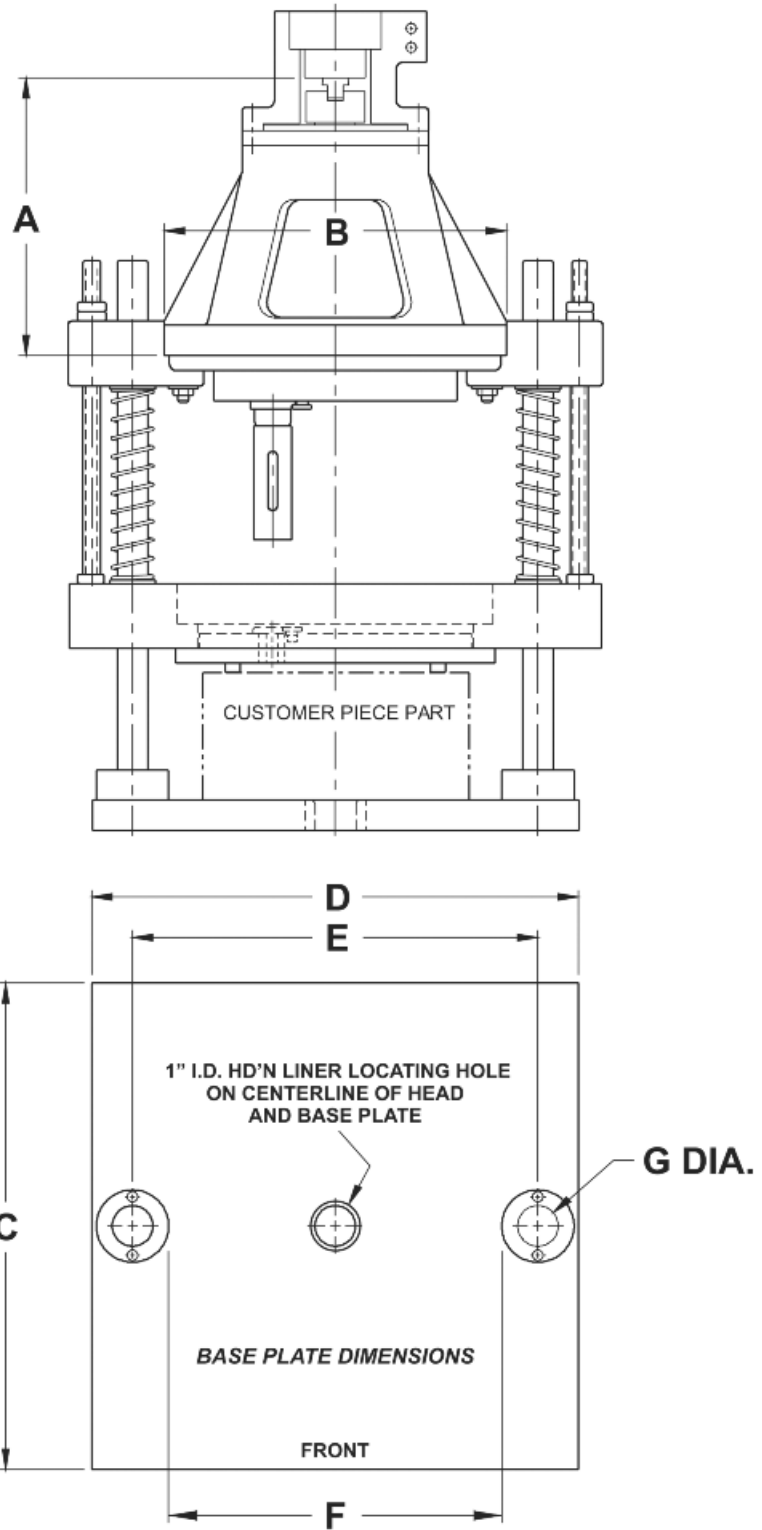
Includes adaptation to drill press advise complete specification.



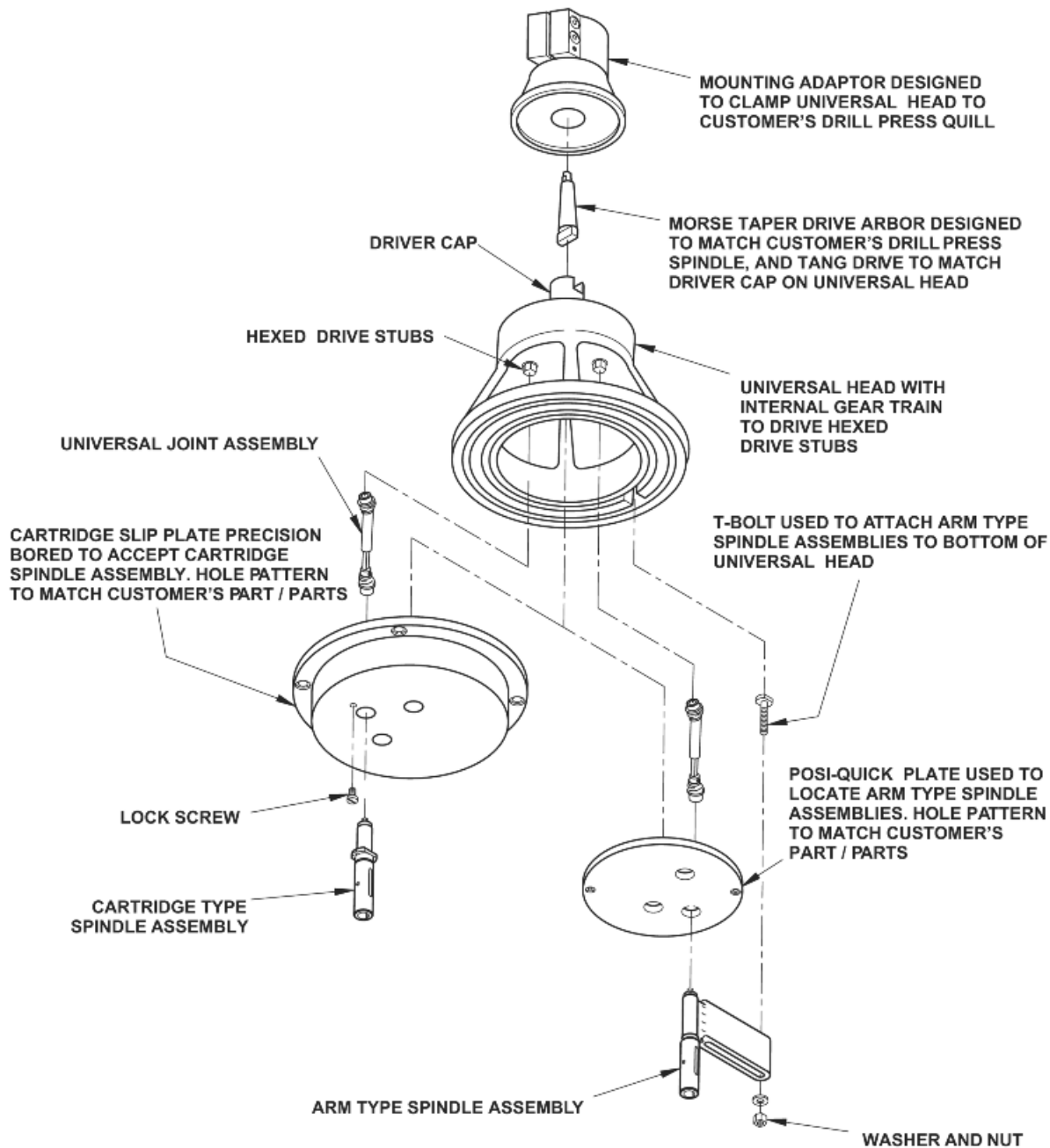
Designers & Manufacturers of Drilling & Tapping Solutions

**IF ONE OF OUR
STANDARD HEADS
DOES NOT SUIT
YOUR PARTICULAR
APPLICATION:**

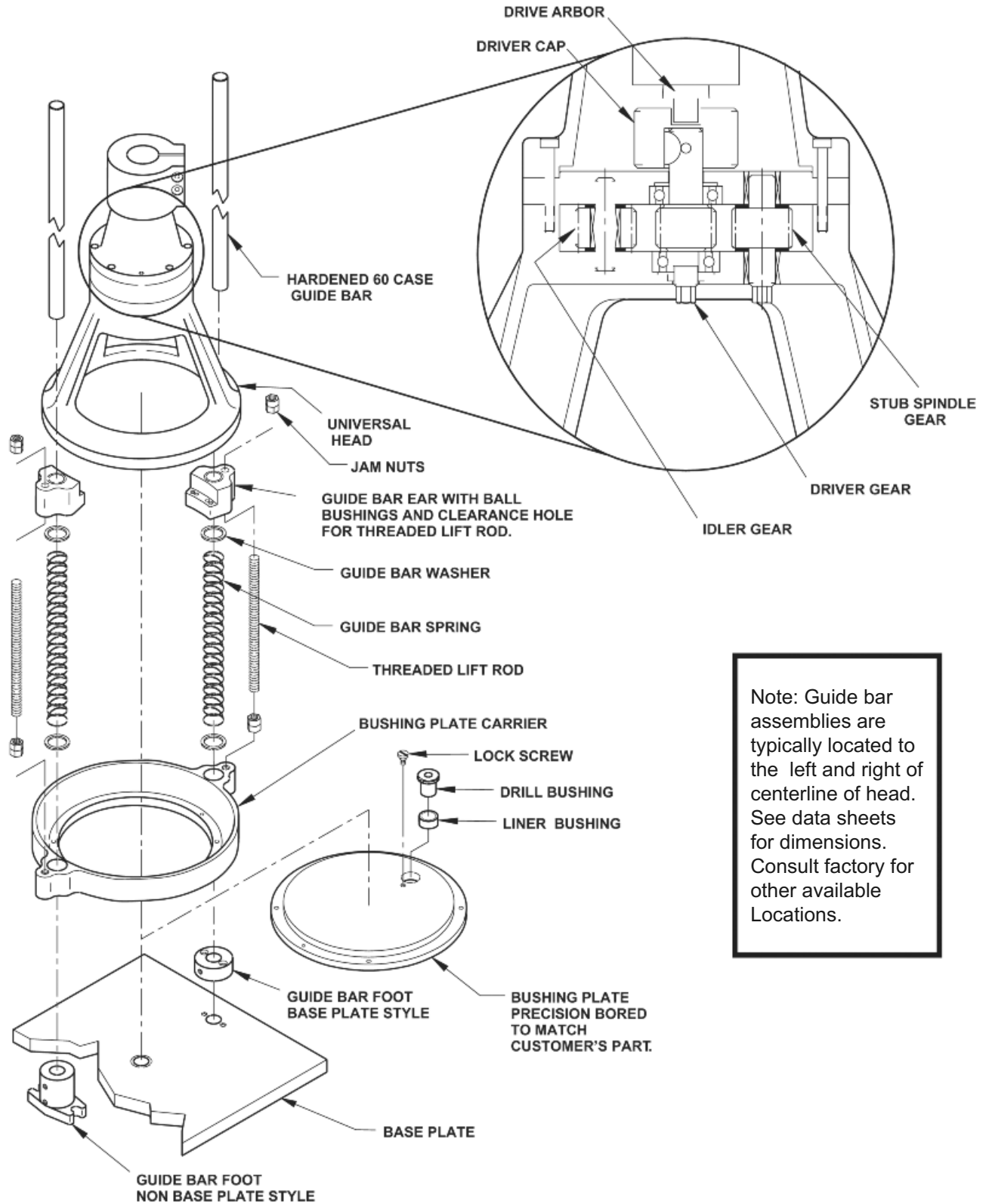
- **WE CAN ADD
SPINDLE GEARS**
- **WE CAN DELETE
SPINDLE GEARS**
- **WE CAN CHANGE
THE STANDARD
1:1 GEAR RATIO**
- **WE CAN BUILD
A CUSTOM
HEAD TO SUIT
YOUR PARTICULAR
APPLICATION**
- **WE REBUILD USED
HEADS WITH FULL
WARRANTY**



Designers & Manufacturers of Drilling & Tapping Solutions

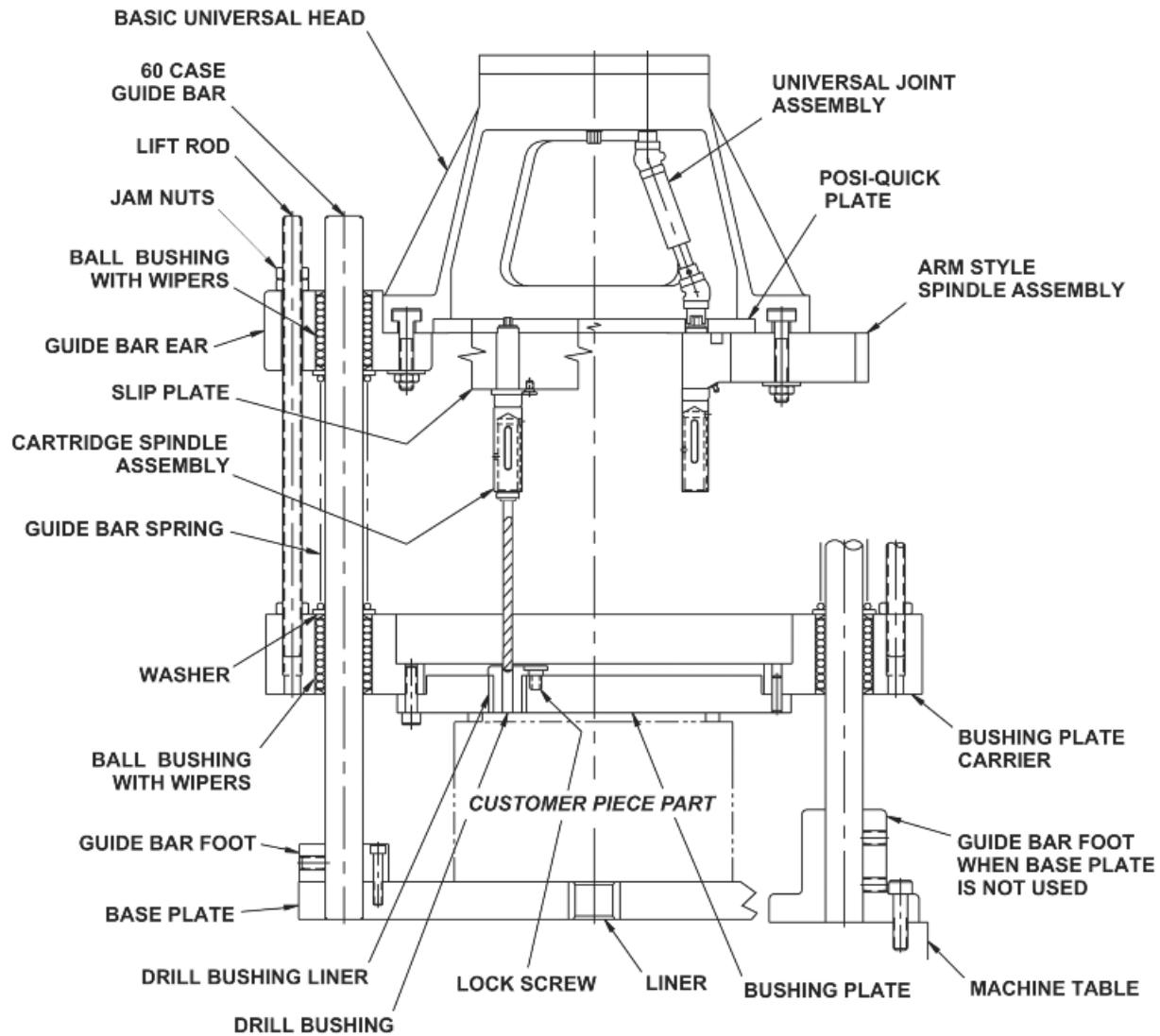


Designers & Manufacturers of Drilling & Tapping Solutions



Note: Guide bar assemblies are typically located to the left and right of centerline of head. See data sheets for dimensions. Consult factory for other available Locations.

Designers & Manufacturers of Drilling & Tapping Solutions



This optional guide bar assembly consists of:

- (1) Two 60 case guide bars*
- (2) One bushing plate carrier to hold bushing plate and one blank bushing plate*
- (3) Two lift rods*
- (4) One base plate with center locating bushing*
- (5) Compression springs with lengths cut to suit*

OPTIONS:

Bushing plate assemblies can be furnished complete as shown or with specific details quoted upon request.

Designers & Manufacturers of Drilling & Tapping Solutions



Guide Bar Assembly

This is used to align the basic head with the machine table or working surface. It also provides a carrier for the bushing plate and a mounting surface for the fixture.

Slip Plate

This is used to give a rigid, fixed position accuracy to the cartridge spindle positions, and reduce set-up time for repeat runs with the same pattern. It also allows the spindle and tooling arrangement to be left intact from set-up to set-up.



Posi-Quick Set-Up Plate

This is used to give a positive accurate location to the arm spindle positions, reduce set-up time, and provide support to the spindle arm.

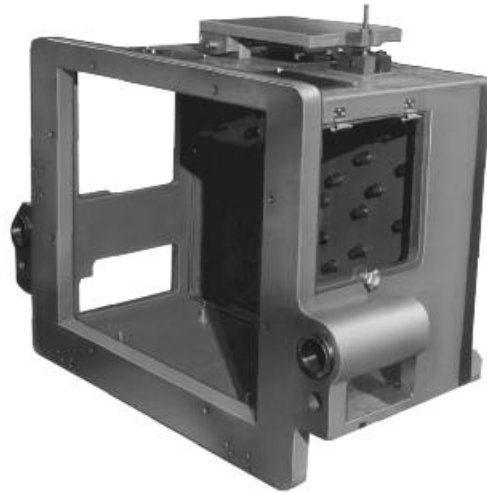
Designers & Manufacturers of Drilling & Tapping Solutions



Model 1260

Universal round drill head with slip plate and suspended bushing plate arrangement with center locator

Model 3030-80
Universal rectangular drill head gearbox and skirt



Model 1424-60

3 speed universal rectangular drill head gear box and skirt